

SECTION 4 CHARTS AND DIAGRAMS

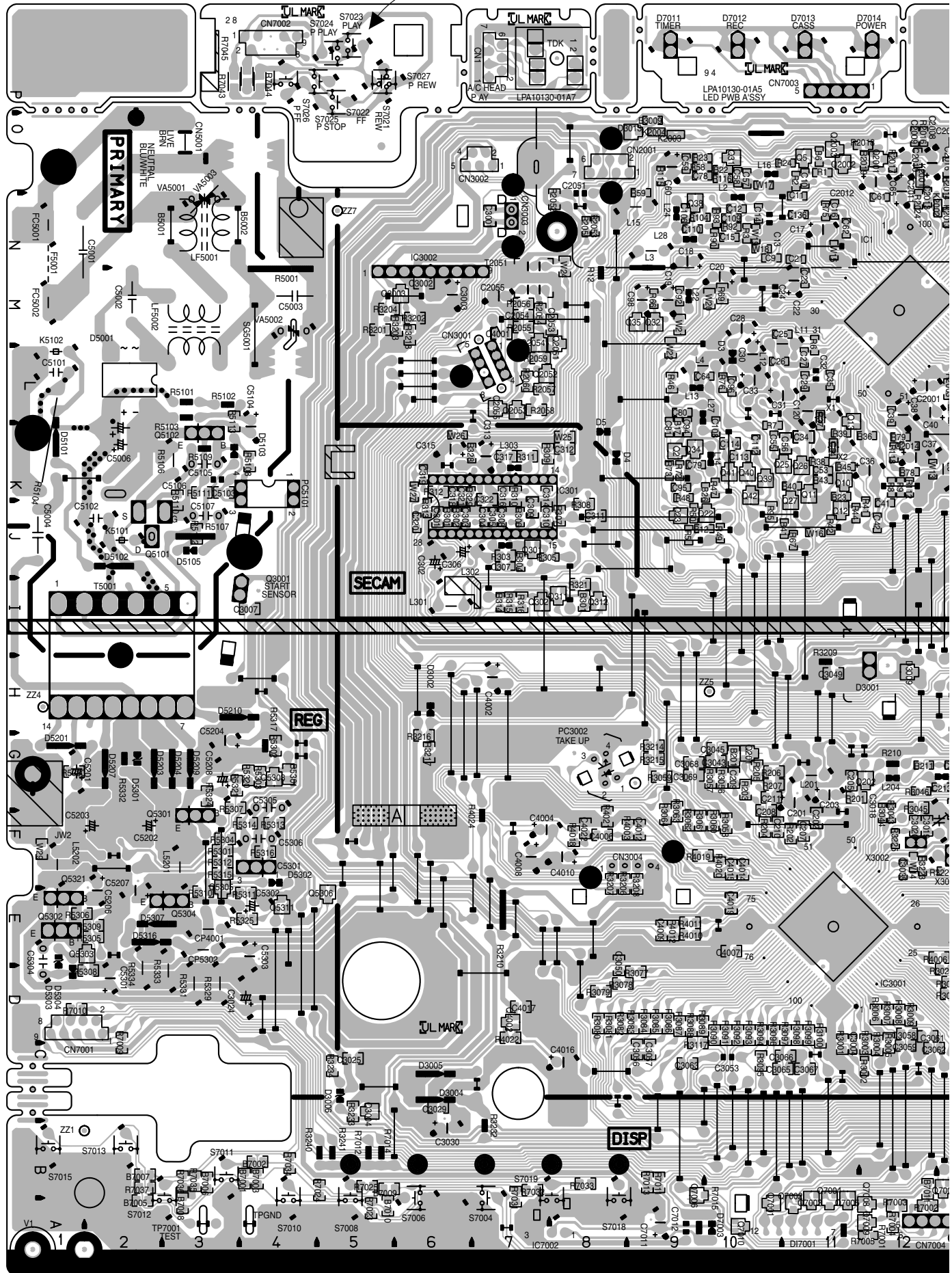
COMPONENT PARTS LOCATION GUIDE < MAIN >

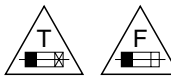
REF.NO.	LOCATION	REF.NO.	LOCATION	REF.NO.	LOCATION	REF.NO.	LOCATION	REF.NO.	LOCATION	REF.NO.	LOCATION	REF.NO.	LOCATION	REF.NO.	LOCATION	REF.NO.	LOCATION									
CAPACITOR																										
C1	B C	14N	C903	A D	20M	C4009	B C	9E	CN4	A D	7P	L6003	A D	21L	R24	B C	11Q	R2213	B C	17L	R3223	B C	12F	R7015	A D	9A
C2	B C	13Q	C2001	A D	20M	C4010	B C	9F	CN2001	A D	9P	L6032	A D	22G	R36	B C	12K	R2214	B C	17M	R3224	B C	13F	R7020	B C	16B
C3	B C	13Q	C2002	A D	14L	C4011	B C	9F	CN2002	A D	8L	L6050	A D	20J	R37	B C	11L	R2215	B C	18M	R3225	B C	12F	R7021	B C	17B
C4	B C	13Q	C2003	A D	12L	C4012	B C	9C	CN3001	A D	7L	L6501	A D	17L	R38	B C	11K	R2216	B C	18M	R3226	B C	19E	R7022	B C	16A
C5	A D	13N	C2004	B C	13M	C4013	B C	10F	CN3002	A D	7O	L7111	A D	7O	R39	B C	11K	R2217	B C	18M	R3227	B C	20E	R7023	B C	5A
C6	B C	13N	C2005	A D	13Q	C4014	B C	10F	CN3003	A D	7N	L7112	A D	7N	R41	B C	12J	R2218	B C	19M	R3228	A D	7B	R7024	B C	5B
C7	B C	15Q	C2006	A D	13Q	C4015	B C	8C	CN3004	A D	9F	L7201	A D	16C	R42	B C	11J	R2219	B C	18M	R3233	B C	5C	R7025	B C	5B
C8	B C	13Q	C2007	A D	13Q	C4016	B C	7D	CN3005	A D	20G				R43	B C	11K	R2220	B C	18L	R3234	B C	5C	R7030	B C	14A
C9	B C	10N	C2008	A D	12Q	C4022	B C	8F	CN3010	A D	20F				R44	B C	11J	R2221	A D	15K	R3235	B C	20J	R7031	B C	7B
C10	B C	11Q	C2009	A D	12Q	C5001	A D	1M	CN5001	A D	3D	Q1	B C	14Q	R45	B C	11K	R2222	B C	16Q	R3236	B C	15C	R7032	B C	7B
C11	B C	11N	C2010	B C	12Q	C5002	A D	2M	CN7001	A D	2D	Q2	B C	14Q	R46	B C	9L	R2223	B C	16N	R3237	B C	15D	R7033	B C	8B
C12	B C	10N	C2011	A D	12Q	C5003	A D	4M	CN7002	A D	4P	Q3	B C	14Q	R47	B C	10K	R2224	B C	15L	R3238	B C	15C	R7034	B C	4B
C13	B C	10N	C2012	A D	12Q	C5004	A D	1J	CN7003	A D	4Q	Q4	B C	11Q	R48	B C	9K	R2225	B C	15L	R3240	A D	5B	R7035	B C	3B
C14	B C	10N	C2013	B C	12N	C5006	A D	2K	CN7004	A D	12P	Q5	B C	11K	R50	B C	10J	R2226	B C	18N	R3241	A D	5B	R7036	B C	3B
C15	B C	10N	C2014	B C	12K	C5101	A D	1L	CN7101	A D	13A	Q10	B C	11K	R50	B C	9J	R2227	B C	18N	R3242	B C	13G	R7037	B C	2B
C16	B C	11N	C2016	B C	13Q	C5102	A D	1J			20M	Q11	B C	11J	R58	B C	9Q	R2228	B C	17N	R3243	B C	14E	R7043	B C	3P
C17	A D	11N	C2052	A D	8N	C5103	B C	3K				Q12	B C	11J	R59	B C	9N	R2229	B C	17N	R3244	B C	14D	R7044	B C	4P
C18	A D	9N	C2053	B C	8M	C5105	A D	3L	D1	A D	16Q	Q21	B C	9K	R67	B C	9M	R2251	B C	15N	R3245	B C	13E	R7045	B C	4P
C19	A D	9M	C2054	B C	7M	C5106	A D	3K	D3	A D	10M	Q23	B C	9J	R71	B C	11J	R2252	B C	15M	R4001	A D	14G	R7046	A D	15B
C20	A D	10M	C2055	A D	7M	C5107	A D	3J	D4	A D	8K	Q25	B C	9K	R72	B C	10M	R2253	A D	15M	R4002	A D	14G	R7101	B C	19M
C21	A D	11N	C2201	A D	18N	C5201	A D	1G	D5	A D	8K	Q26	B C	11K	R73	B C	13M	R2255	B C	15M	R4003	B C	9F	R7102	B C	19M
C22	A D	11M	C2202	A D	18N	C5202	A D	1F	D2201	A D	18L	Q27	B C	11K	R75	B C	9K	R3002	B C	12C	R4006	B C	13E	R7155	B C	16P
C23	A D	11M	C2203	A D	16N	C5203	A D	1F	D3001	A D	12H	Q31	B C	10Q	R76	B C	11N	R3003	B C	12C	R4010	B C	9E	R7156	B C	17P
C24	A D	10M	C2204	A D	16Q	C5204	A D	3G	D3002	A D	6H	Q32	B C	9M	R77	B C	10L	R3004	B C	12D	R4011	B C	9E	R7171	B C	19A
C25	B C	11M	C2205	A D	16Q	C5206	A D	2F	D3004	A D	6C	Q34	B C	9K	R78	B C	15Q	R3005	B C	12D	R4012	B C	9E	R7172	B C	19B
C26	B C	10L	C2206	A D	15Q	C5207	A D	2E	D3005	A D	6C	Q35	B C	9M	R79	B C	12K	R3006	B C	12D	R4013	B C	13D	R7173	B C	19N
C27	A D	10M	C2207	B C	15N	C5208	A D	3E	D3006	A D	5C	Q38	B C	9N	R80	B C	12K	R3007	B C	12D	R4018	B C	8F	R7174	B C	19N
C28	A D	10M	C2208	B C	15M	C5301	A D	2D	D3007	B C	15C	Q39	B C	10K	R82	B C	10N	R3008	B C	12D	R4019	B C	9F	R7175	B C	21N
C29	A D	10L	C2209	A D	15M	C5302	A D	2E	D3008	A D	20G	Q40	B C	10K	R93	B C	10M	R3009	B C	12D	R4020	B C	10F	R7176	B C	20N
C30	A D	10L	C2210	A D	15L	C5303	A D	4E	D3009	B C	12H	Q41	B C	10K	R92	B C	10N	R3010	B C	13C	R4021	B C	8F	R7202	A D	16D
C31	A D	10L	C2211	A D	14L	C5304	A D	1E	D3013	B C	9O	Q42	B C	10K	R95	B C	10J	R3011	B C	13C	R4022	B C	7D	R7203	B C	16D
C32	A D	10L	C2212	A D	15M	C5305	A D	4F	D3015	B C	19E	Q201	B C	10G	R104	B C	9N	R3012	B C	13C	R4024	A D	7F	R7204	A D	16C
C33	A D	10L	C2213	A D	15M	C5306	A D	4F	D3016	A D	14E	Q202	B C	12G	R112	B C	12K	R3013	B C	13C	R4025	A D	14H	VR6501	A D	19G
C34	B C	11K	C2214	A D	17L	C5307	A D	22D	D3017	A D	14I	Q301	B C	7J	R115	B C	9O	R3014	B C	13C	R5001	A D	4M	VR6502	A D	20L
C35	B C	11L	C2215	A D	17M	C5308	A D	22E	D4003	B C	13F	Q302	B C	7I	R116	B C	10O	R3015	B C	14C	R5101	A D	3L			
C36	A D	12K	C2216	A D	17M	C6005	A D	21K	D5001	B C	2L	Q311	B C	8I	R118	B C	12K	R3016	B C	14D	R5102	A D	3L			
C37	A D	12K	C2217	A D	17M	C6006	A D	21K	D5010	A D	2J	Q312	B C	8I	R201	B C	11G	R3017	B C	14D	R5103	A D	3L	S3001	A D	18C
C38	A D	12L	C2218	A D	18M	C6007	A D	21J	D5102	A D	2K	Q901	B C	21M	R203	B C	11F	R3018	B C	14D	R5104	A D	1L	S7001	A D	22B
C39	A D	13L	C2219	A D	18M	C6008	B C	21J	D5103	A D	3K	Q902	B C	21M	R203	B C	10G	R3019	B C	13D	R5106	A D	3K	S7004	A D	7B
C40	A D	13L	C2220	A D	17M	C6012	A D	21M	D5105	A D	3J	Q2001	B C	12O	R205	B C	10F	R3020	B C	13D	R5107	A D	3J	S7006	A D	6B
C41	B C	12J	C2221	B C	17M	C6013	B C	21M	D5201	A D	1G	Q2002	B C	11O	R206	B C	10G	R3021	A D	15D	R5108	B C	4K	S7008	A D	5B
C42	B C	12J	C2222	B C	16Q	C6020	B C	22M	D5203	A D	2G	Q2003	B C	11O	R206	B C	10G	R3022	A D	15D	R5109	A D	3K	S7010	A D	4B
C44	A D	14M	C2223	B C	15L	C6021	B C	22M	D5204	A D	3G	Q2051	B C	8M	R207	B C	10G	R3026	B C	13E	R5110	B C	3K	S7011	A D	3B
C51	A D	17G	C2224	B C	16Q	C6022	B C	22M	D5207	A D	2G	Q2052	B C	7L	R210	A D	12G	R3027	A D	14E	R5111	B C	3K	S7012	A D	3B
C53	B C	11K	C2225	B C	15Q	C6022	B C	22L	D5209	A D	3G	Q2053	B C	7L	R211	B C	12G	R3028	B C	13E	R5112	B C	3J	S7013	A D	2B
C54	B C	11K	C2252	B C	15Q	C6023	B C	22L	D5210	A D	3H	Q2054	B C	7M	R302	B C	6J	R3029	B C	13E	R5113	B C	3L	S7015	A D	1B
C55	B C	10K	C2253	B C	14Q	C6027	B C	22K	D5301	A D	2F	Q2055	B C	7L	R303	B C	6J	R3030	B C	13F	R5301	B C	3F	S7016	A D	17B
C56	B C	10K	C2254	A D	15N	C6028	B C	22K	D5302	A D	4G	Q2201	B C	7L	R303	B C	7J	R3031	B C	13F	R5302	B C	4G	S7017	A D	16B
C57	B C	10Q	C2255	B C	15N	C6029	B C	21K	D5303	A D	1D	Q2202	B C	7L	R304	B C	7J	R3032	B C	13F	R5303	B C	4G	S7018	A D	8B
C58	B C	10Q	C2256	B C	15N	C6029	B C	21K	D5304	A D	1E	Q2203	B C	7M	R305	B C	8J	R3033	B C	13F	R5304	B C	3F	S7019	A D	8B
C59	B C	9Q	C2257	B C	14M	C6033	B C	21J	D5305	A D	22D	Q2204	B C	7M	R306	B C	7J	R3034	B C	13G	R5305	B C	2E	S7021	A D	5P
C60	A D	9Q	C2258	B C	14M	C6033	B C	21J	D5307	A D	3E	Q2251	B C	14N	R307	B C	8J	R3043	B C	12F	R5306	B C	1E	S7022	A D	5P
C61	B C	12N	C2259	A D	15M	C6052	B C	22N	D5316	A D	2E	Q2252	B C	14L	R308	B C	8J	R3044	B C	12F	R5307	B C	3G	S7023	A D	5P
C62	B C	11N	C2260	A D	15M	C6053	B C	21O	D6002	A D	21M	Q2253	B C	15M	R309	B C	7K	R3045	B C	12G	R5308	B C	2D	S7024	A D	5P
C64	B C	10L	C2261	B C	15M	C6501	B C	17N	D7003	A D	10A	Q3001	A D	4I	R310	B C	7K	R3046	B C	12G	R5309	B C	2E	S7025	A D	5P
C65	A D	12N	C2262	B C	15N	C6502	A D	18N	D7009	A D	15A	Q3002	A D	19I	R311	B C	7K	R3056	B C	10G	R5310	B C	3E	S7026	A D	4P
C69	B C	14N	C2263	B C	7N	C6504	A D	17L	D7010	A D	16A	Q3003	B C	6M	R313	B C	6K	R3057	B C	10G	R5311	B C	4E	S7027	A D	5P
C70	B C	9Q	C3002	A D	6M	C6505	A D	16L	D7011	A D	9P	Q3004	B C	5C	R314	B C	6J	R3058	B C	10F	R5312	B C	3F			
C78	B C	9Q	C3003	A D	6M	C6506	A D	20K</																		

4.1 MAIN, MINI FRONT AND LITHIUM BATTERY CIRCUIT BOARDS

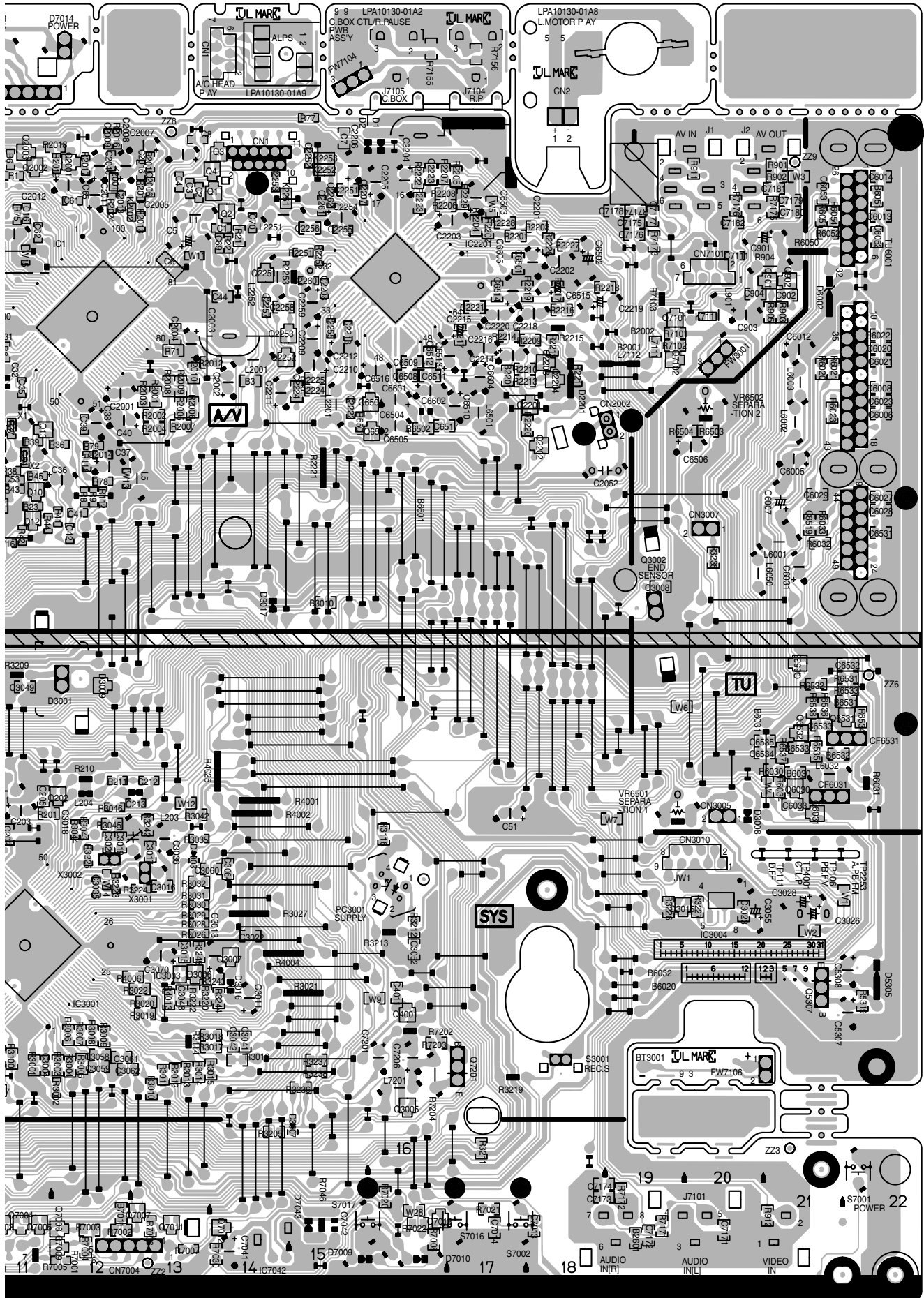
<03> MAIN, <28> MINI FRONT
LPB10130-001D

DANGEROUS VOLTAGE





CAUTION :
 FOR CONTINUED PROTECTION AGAINST FIRE HAZARD, REPLACE ONLY WITH SAME TYPE AND RATED FUSE(S).
 FOR CONTINUED PROTECTION AGAINST FIRE HAZARD, REPLACE ONLY WITH SAME TYPE CP(S) MANUFACTURED BY ROHM.
 ATTENTION :
 REPLACER PAR DES FUSIBLE DE MEME TYPE.



4.2 MAIN(TUNER) SCHEMATIC DIAGRAM

5

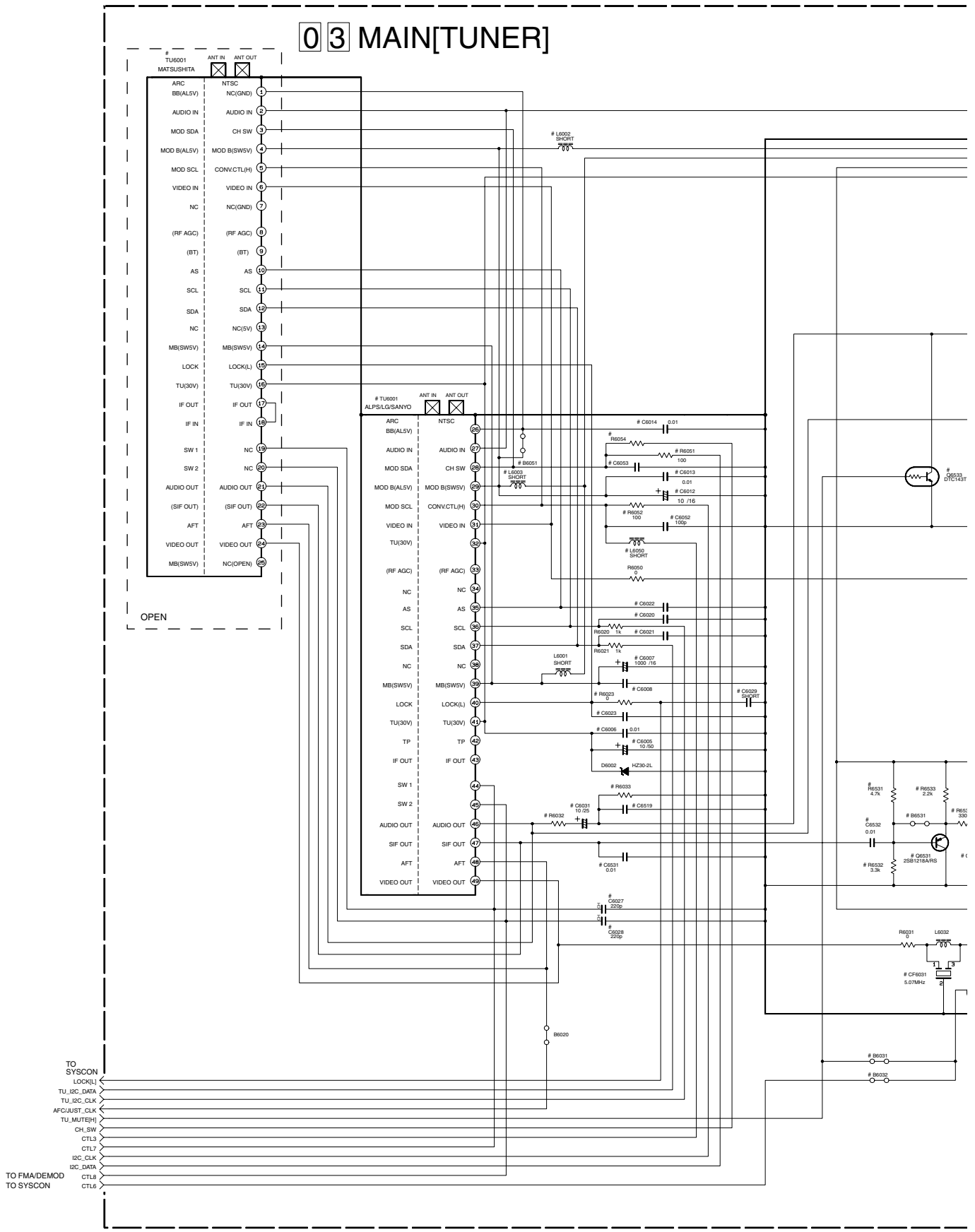
4

3

2

1

03 MAIN[TUNER]

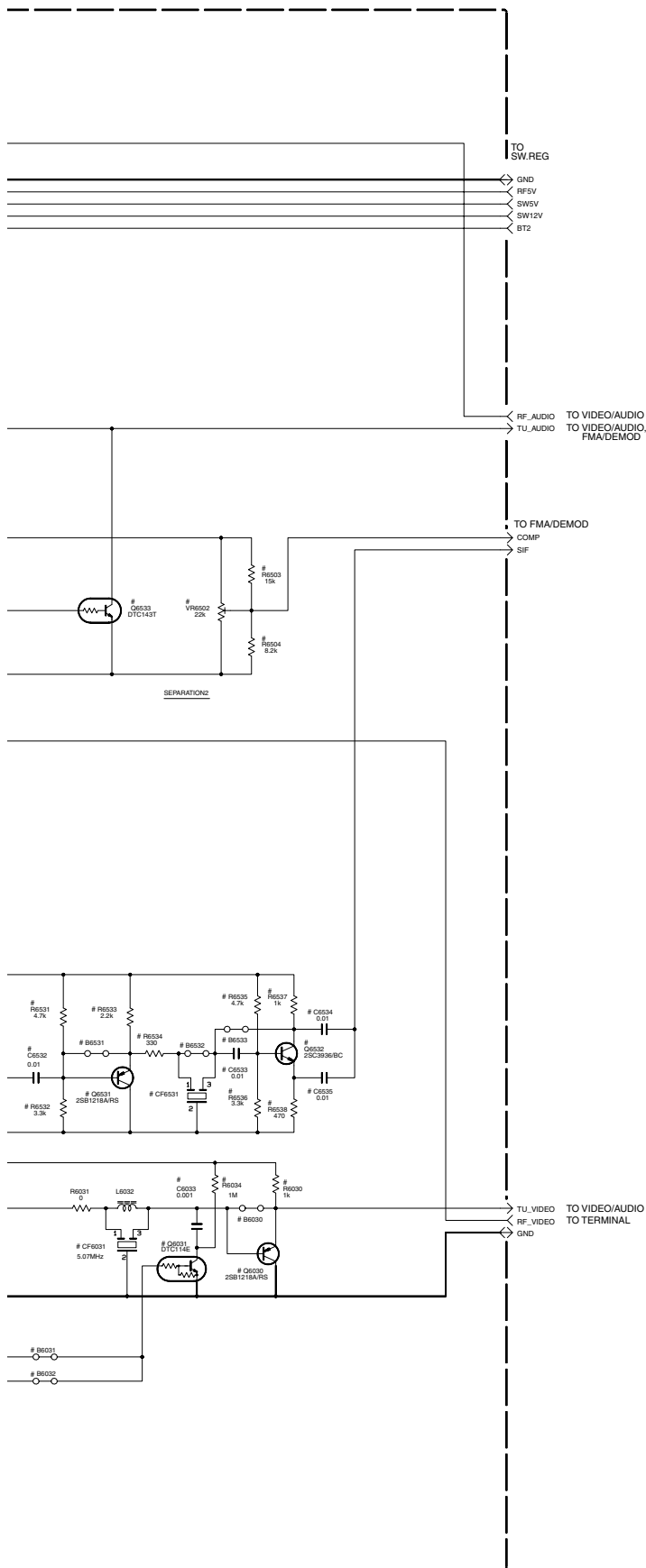


TO SYSCON
 LOCK(L)
 TU_IC_CLKP
 TU_IC_CLK
 AFC/JUST_CLK
 TU_MUTE(H)
 CH_SW
 CTL3
 CTL7
 I2C_CLK
 I2C_DATA
 TO FMA/DEMOD
 TO SYSCON
 CTL8

CTL3	CONV_CTL(H)MESECAM(H)
CTL8	J1USA/TU_V_MUTE(H)
CTL7	AGC_CTL/SW1
CTL8	LED/SW2

NG

Note : The Parts Number, value and rated voltage etc. in the Schematic Diagram are for references only.
When replacing the parts, refer to the Parts List.



○ :Used
× :Not used

DIFFERENCE TABLE (US,PAL-M/N)

		HiFi	MONO
TU6001	ALPS	GAU0207	GAU0207
	SANYO	GAU0226	GAU0226
VIDEO BUFFER	CR630,R6030	○	○
	B6030	×	×
VIDEO MUTE	CR631,R6034, CR633,B6031	×	×
	R6023,C6023	×	×
LOCK	CR629	○	○
	R6032	×	10k
MONO	R6033	×	10k
	CR519	×	0.012
	CR631	×	○
HFI	VR602	×	×
	R603,R604	○	×
MOD B(SWSV)	L6003	○	○
CONV CTL	L6050	○	○
CONV SW	R6054	○	○
PAL	CR605-C608, CR610-C614, CR620-C622, CR652-C653, CR651-C652, CR631-C633, CF603,CF631, B6531-B6533, R6531-R6538, CR531-C635	×	×
	B6032,B6051, L6002, R6051,R6052, CR627,C6028	×	×

DIFFERENCE TABLE (EUPORE,ASIA - PAL/MS)

TUNER UNIT	TU6001	ELIEK			FRANCE MS		ASIA 3SYSTEM		ASIA 4SYSTEM
		MATSUSHITA	ALPS	ALPS	LG	MATSUSHITA	ALPS	MATSUSHITA	
		GAU0208	GAU0209	GAU0210	GAU0211	GAU0208	GAU0209	GAU0212	
VIDEO BUFFER	CR630,R6030	○	○	○	○	○	○	○	
	B6030	×	×	×	×	×	×	×	
VIDEO MUTE	CR631,R6034	○	○	○	○	×	×	×	
	CR633	0a	0a	0a	0a	×	×	×	
	B6031	×	×	×	×	×	×	×	
AUDIO MUTE	B6032	○	○	○	○	×	×	×	
	CR633	○	○	○	○	×	×	×	
TU IC	CR621	×	×	×	×	×	×	×	
	CR622	×	×	×	×	×	×	×	
LOCK	R6023,C6023	×	×	×	×	×	×	×	
	CR629	○	○	○	○	○	○	○	
MONO	R6032	3.3k	3.3k	3.3k	3.3k	3.3k	3.3k	0a	
	R6033	1.8k	1.8k	1.8k	1.8k	1.8k	1.8k	1.8k	
	CR631	○	○	○	○	○	○	○	
	CR519	0.047	0.047	0.047	0.047	0.047	0.047	0.047	
US MPX	VR602	×	×	×	×	×	×	×	
	L6002,B6051	○	○	○	○	○	○	○	
ALSV	CR612	×	×	×	×	×	×	×	
	CR613	×	×	×	×	×	×	×	
	CR614	○	○	○	○	○	○	○	
	R6051,R6052	○	○	×	×	○	○	○	
MOD SDASCL	R6054,L6050	×	×	×	×	×	×	×	
	CR652,C6053	×	×	×	×	×	×	×	
SWSV	L6003	×	×	×	×	×	×	×	
	CR607	×	×	×	×	×	×	×	
	CR608	×	×	×	×	×	×	×	
TU(30V)	CR605	×	×	×	×	×	×	×	
	CR606	×	×	×	×	×	×	×	
SIF OUT	CR531-C635, R6531-R6538, CR631-C633, B6531-B6533, CF631	×	×	×	×	×	×	×	
	CR627	×	×	○	×	×	×	×	
	CR628	×	×	×	×	×	×	×	

NOTES-UNLESS OTHERWISE SPECIFIED:
ALL RESISTANCE VALUES ARE IN OHMS.
ALL INDUCTANCE VALUES ARE IN H.
ALL CAPACITANCE VALUES ARE IN μF.

